

PRODUCT INFORMATION PACKET

Model No: 048A11O1874

Catalog No: X038

0.50 HP 2 speed Fan and Blower HVAC/R Motor, 1 phase, 1200/1200 RPM, 460 V, 48Y Frame, OPAO
Direct Drive Motors



Regal and Marathon are trademarks of Regal Beloit Corporation or one of its affiliated companies.
©2020 Regal Beloit Corporation, All Rights Reserved. MC017097E

REGAL

Nameplate Specifications

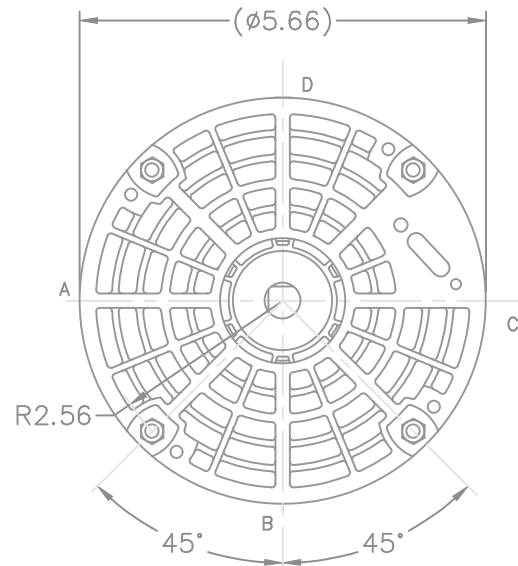
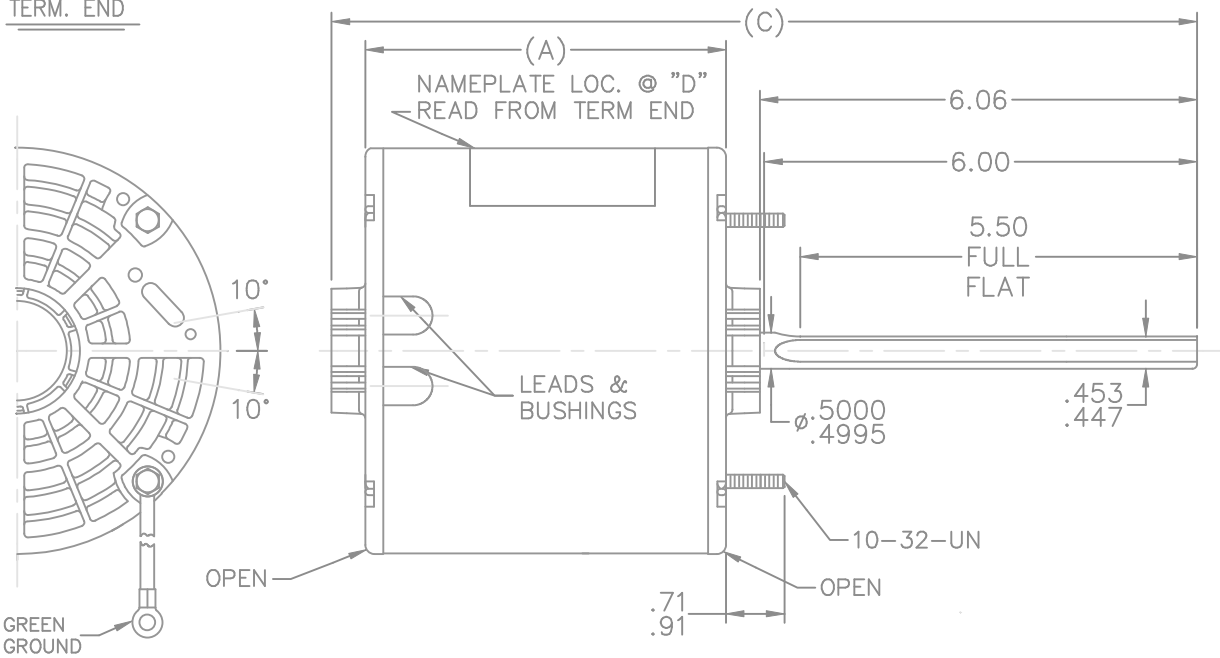
Output HP	0.50 Hp	Output KW	0.37 kW
Frequency	60 Hz	Voltage	460 V
Current	1.6 A	Speed	1075 rpm
Service Factor	1	Phase	1
Efficiency	62.6 %	Power Factor	85.1
Duty	Continuous	Insulation Class	B
Design Code	2VT	KVA Code	D
Frame	48Y	Enclosure	Open Air Over
Thermal Protection	Automatic Lock Rotor Only	Ambient Temperature	40 °C
Drive End Bearing Size	6203	Opp Drive End Bearing Size	6203
UL	Recognized	CSA	Y
CE	N	IP Code	01

Technical Specifications

Electrical Type	Permanent Split Capacitor	Starting Method	Across The Line
Poles	6	Rotation	Selective Counterclockwise
Mounting	Round	Motor Orientation	Horizontal
Drive End Bearing	Ball	Opp Drive End Bearing	Ball
Frame Material	Rolled Steel	Shaft Type	Single Special Extension
Overall Length	12.19 in	Frame Length	4.75 in
Shaft Diameter	0.500 in	Shaft Extension	6.06 in
Assembly/Box Mounting	F1 ONLY		
Outline Drawing	A-SS400491-475	Connection Drawing	9580309

This is an uncontrolled document once printed or downloaded and is subject to change without notice. Date Created:14/10/2020

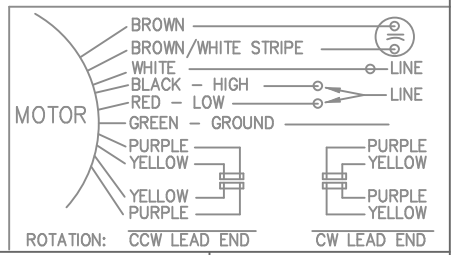
TERM. END



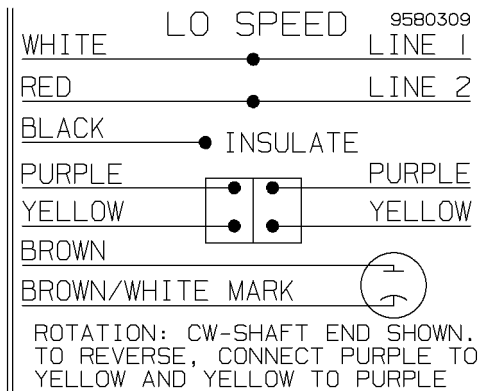
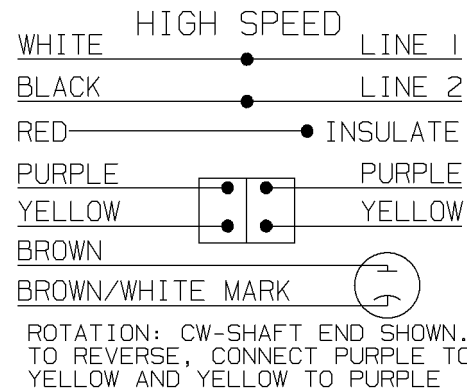
LEAD DESCRIPTION:

1 BLACK, 1 RED & 1 WHITE LEAD WITH .50 BARE WIRE STRIP 27.00" LONG.
 2 BROWN CAPACITOR LEADS WITH .50" BARE WIRE STRIP 27.00" LONG BROWN WITH WHITE MARK IS COMMON TO WHITE LEAD.
 REVERSING LEADS ARE MOLDED INTO MATING PULL APART PLUGS 1 PURPLE, AND 1 YELLOW PER PLUG 5.00" LONG.
 GREEN GROUND LEAD WITH TERM. FOR #10 SCREW 12.00" LONG.

DASH	FRAME	C	A
400	48Y	11.44	4.50
425	48Y	11.69	4.75
450	48Y	11.94	5.00
475	48Y	12.19	5.25
500	48Y	12.44	5.50



			TOLERANCES UNLESS SPECIFIED		MARATHON ELECTRIC	DRAWN TRB 09-01-1999		
NO.	REVISION	BY & DATE	CHK	ANG		DEC.	INCHES	CHK ML 09-02-1999
5	UPDATED DRAWING	RJW 04-13-2007					APPD RJS 09-03-1999	
4	REDRAWN IN AUTOCAD	TAT 08-03-2004	ML	.X	±.1		SCALE 3=8	
3	REVISED NAME PLATE LOCATION CN 29400-13	CAV 01-18-2000		.XX	±.03	TITLE OUTLINE	REF	
2	BLACK, RED, & WHITE WAS 30" MU26803	CAV 09-10-1999		.XXX	±.005	MAT'L.	FMF	
1	NEW DRAWING MU26799	TRB 09-03-1999		.XXXX	±.0005	FINISH	PREV	
THIS DRAWING IN DESIGN AND DETAIL IS OUR PROPERTY AND MUST NOT BE USED EXCEPT IN CONNECTION WITH OUR WORK ALL RIGHTS OF DESIGN AND INVENTION ARE RESERVED THIS IS AN ELECTRONICALLY GENERATED DOCUMENT - DO NOT SCALE THIS PRINT			RFP	CAD FILE ss400491		SIZE A	DRAWING NO. SS400491	PAGE OF REV. 5
			DIST	WP				



				✓ MAX. SURFACE ROUGHNESS UNLESS NOTED OTHERWISE	UNLESS OTHERWISE SPECIFIED DIMENSIONS ARE IN INCHES TOL. ON XX±.02 XXX±.005 XXXX±.0005 ANGLES± 7'30"		
				MATL SPEC		DRAWN BY TRB	09-01-1999
				FINISH	MARATHON ELECTRIC	CHKD BY ML	09-02-1999
					WAUSAU, WISCONSIN 54401	APPD BY RJS	09-03-1999
REV	DATE	CHANGE	NAME	PART NAME CONNECTION DIAGRAM INSERT			DRWG NO A- 9580309
		SHOP BOOK	PURCHASED	DISTRIBUTION - WA - LB - WP - LM		CADD FILE NO.	9580309

ERROR: syntaxerror
OFFENDING COMMAND: --nostringval--

STACK:

225 /agrave
224 /germandbls
223 /Thorn
222 /Yacute
221 /Udieresis
220 /Ucircumflex
219 /Uacute
218 /Ugrave
217 /Oslash
216 /multiply
215 /Odieresis
214 /Otilde
213 /Ocircumflex
212 /Oacute
211 /Ograve
210 /Ntilde
209 /Eth
208 /Idieresis
207 /Icircumflex
206 /Iacute
205 /Igrave
204 /Edieresis
203 /Ecircumflex
202 /Eacute
201 /Egrave
200 /Ccedilla
199 /AE
198 /Aring
197 /Adieresis
196 /Atilde
195 /Acircumflex
194 /Aacute
193 /Agrave
192 /quest;ondown



MARATHON ELECTRIC CORPORATION
TYPICAL PERFORMANCE CURVE for AC MOTOR

Customer

Curve at

460

Volts

HP 0.50

PHASE 1

Model No 48A11O1874

60

HZ

VOLTS 460

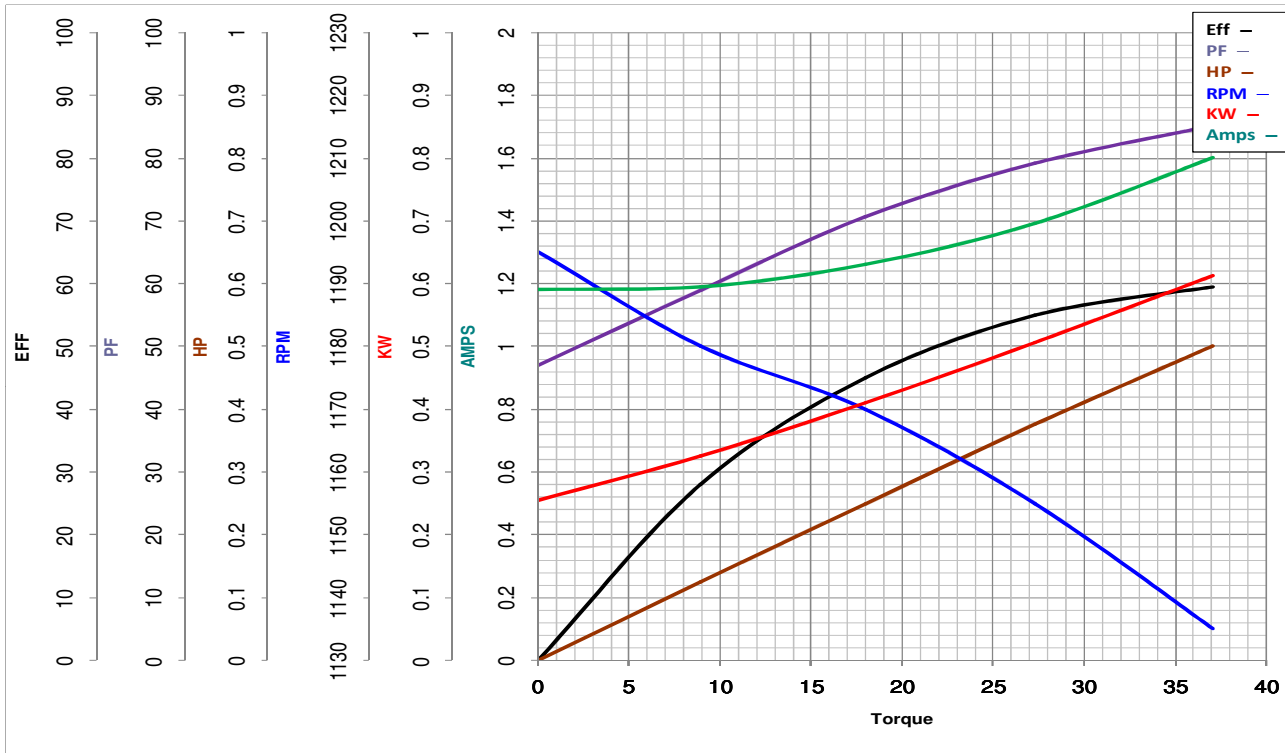
Catalog No X038

0.5

HP

HZ 60

RPM 1075



Torque in Oz.Ft

FL TORQUE 37.07 Oz.Ft
BD TORQUE 71.1 Oz.Ft
LR TORQUE 16 Oz.Ft

FL AMPS 1.6
PU TORQUE 14.8 Oz.Ft
LR AMPS 4.9

WINDING PE4861936-4

Date 1/21/2019